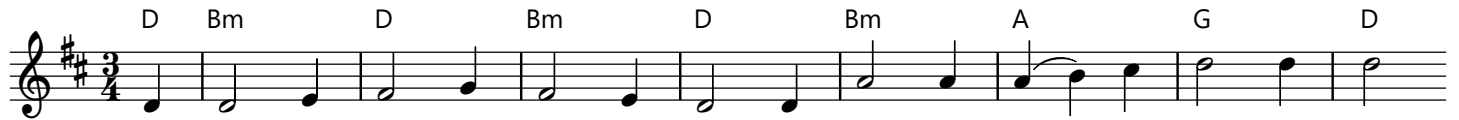
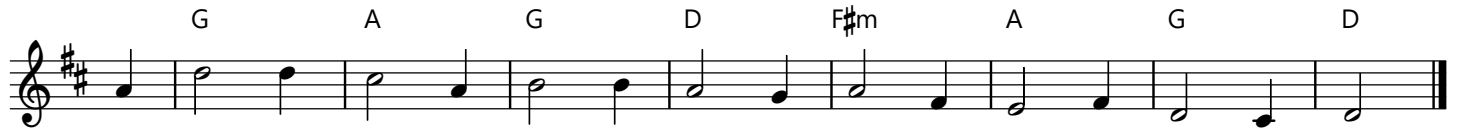


What Star Is This, with Beams So Bright

Chandler / PUER NOBIS



1. What star is this, with beams so bright, more love - ly than the noon - day light?
2. 'Tis now ful - filled what God de - creed: "From Ja - cob shall a star pro - ceed."
3. While out - ward signs the star dis - plays, an in - ward light the Lord con - veys.
4. O Je - sus, while the star of grace in - vites us all to seek thy face,
5. To God the Fa - ther, heav'n - ly Light, to Christ re - vealed in earth - ly night,



1. 'Tis sent to an - nounce a new - born king, glad tid - ings of our God to bring.
2. And lo! the east - ern sag - es stand to read in heav'n the Lord's com - mand.
3. It urg - es them, with force be - nign, to seek the Giv - er of the sign.
4. let not our sloth - ful hearts re - fuse the guid - ance of your light to use.
5. to God the Ho - ly Spir - it raise an end - less song of thank - ful praise!

Inspiration: "Quem stella sole pulchrior"; Charles Coffin, 1676-1749, in the Paris Breviary, 1736.
Lyrics: 88.88; John Chandler, 1806-1876, in "The Hymns of the Primitive Church", 1837.
Music: PUER NOBIS; Trier manuscript, 15th cent.; adapt. by Michael Praetorius, 1571-1621.