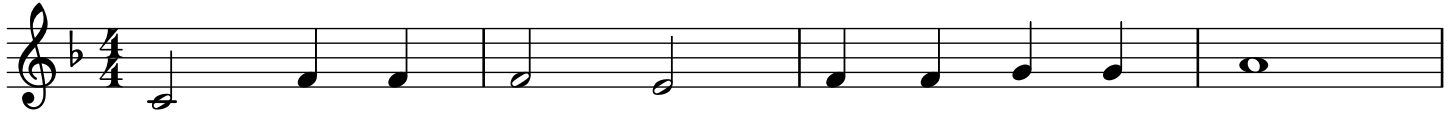
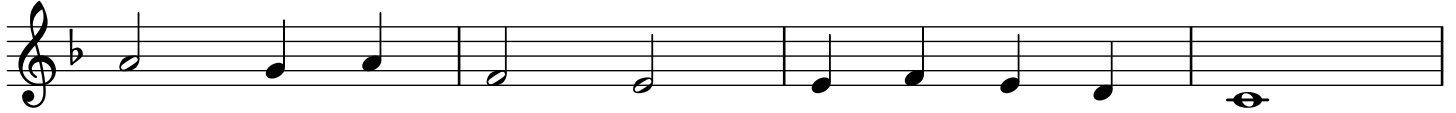


# Draw Near and Take the Body of the Lord

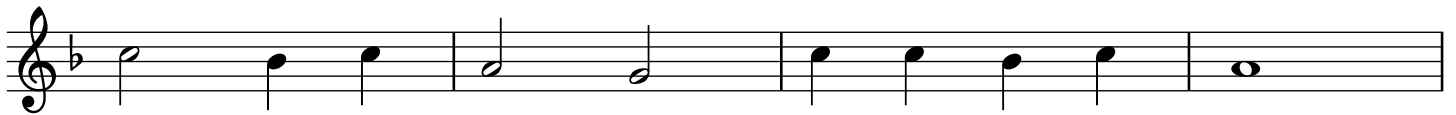
Neale / ANIMA CHRISTI



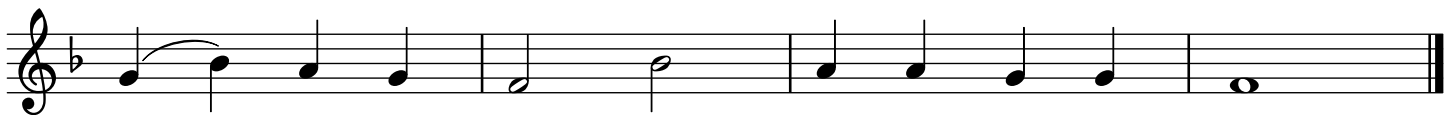
1. Draw near and take the bod - y of the Lord,  
2. Our true Re - deem - er, Christ the on - ly Son,  
3. The vic - tims of - fered by the law of old,  
4. Let us ap - proach with lov - ing hearts sin - cere,  
5. With bread of life he makes the hun - gry whole,



1. and drink his ho - ly blood for you out - poured;  
2. by cross and blood a might - y vic - t'ry won,  
3. as signs from God, e - ter - nal mys - t'ries told,  
4. and take the pledge of our sal - va - tion here;  
5. gives liv - ing wa - ters to each thirst - y soul.



1. saved by his bod - y and his pre - cious blood,  
2. off - 'ring him - self for great - est and for least,  
3. now Christ our light, the ran - som of our race,  
4. Christ, who his faith - ful ser - vants rules and shields,  
5. Christ Je - sus, first and last, is with us now,



1. our souls re - freshed, we of - fer thanks to God.  
2. him - self the vic - tim and him - self the priest.  
3. gives to his own this end - less source of grace.  
4. to all be - liev - ers life e - ter - nal yields.  
5. to him at end of time we all shall bow.

Inspiration: "Sancte venite, Corpus Christi sumite" from the "Antiphony of Bennchar", 7th cent.  
Lyrics: 10.10.10.10; John M. Neale, 1818-1866, in his "Medieval Hymns and Sequences", 1851.  
Music: ANIMA CHRISTI; William J. Maher, SJ, 1823-1877, in "Mission Hymns", 1864.